


Human SCF Protein, His tag (Animal-Free)

Cat #: PRP1905

Size: 5 µg/20 µg/100 µg/1 mg

Product Information

	Product Name: Human SCF Protein, His tag (Animal-Free)		
REF	Catalog Number: PRP1905	LOT	Lot Number: Refer to product label
	Purity: > 98 % as determined by SDS-PAGE		
	Storage: Store at -20°C		Preparation method: E.coli
	Shipping: The product is shipped at ambient temperature.		

Background: Stem Cell Factor (SCF) is the ligand for the tyrosine kinase receptor c-kit, which regulates other growth factors, such as granulocyte colony-stimulating factor (G-CSF), granulocyte macrophage-colony-stimulating factor (GM-CSF), and interleukin-3 to stimulate proliferation, and differentiation of hematopoietic stem cells. SCF can be produced by a variety of cells, including fibroblasts, smooth muscle, endothelial cells, mast cells and bone marrow macrophages endothelial cells.

Sequence: Amino acid sequence derived from Human SCF (Thr25-Ala189) (P21583) was expressed with 6×His tag at the C-terminus.

Protein length: The recombinant Human SCF Protein consists of 165 amino acids and predicts a molecular mass of 18.6 kDa.

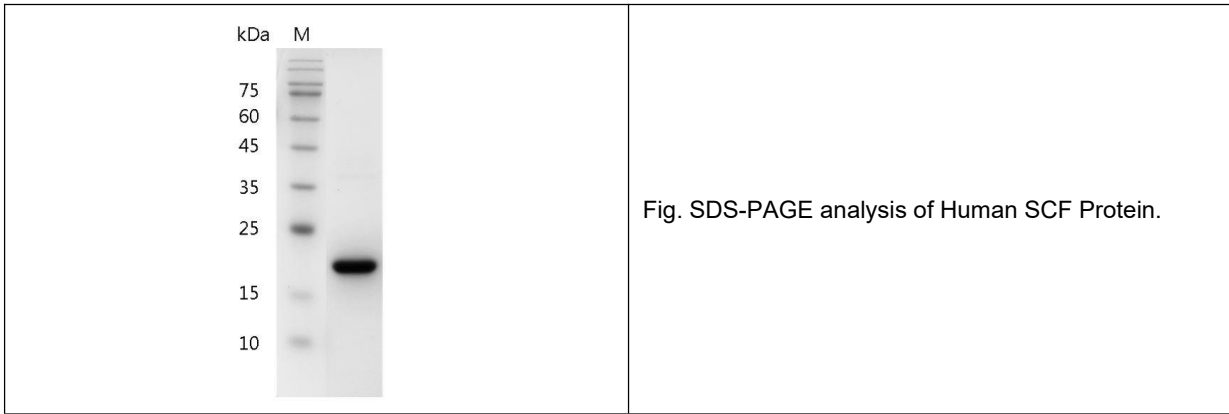
Biological Activity: Measured by its ability to induce TF-1 cells proliferation. The ED₅₀ for this effect is <5 ng/mL.

Endotoxin: <0.1 EU per µg of the protein by the LAL method.

Formulation: Lyophilized from sterile PBS, pH 7.4.

Storage Instructions: Lyophilized protein product should be stored desiccated below -18°C. Upon reconstitution, the protein should be stored at 4°C between 2-7 days and for future use below -18°C. For long term storage it is recommended to add a carrier protein (5% HSA, 10%FBS or 0.1%BSA). Please prevent freeze-thaw cycles.

Usage notes: Always centrifuge tubes before opening. It is recommended to reconstitute the lyophilized recombinant protein to a concentration of 0.1-1 mg/mL using the buffer we provided, and keep at room temperature for at least 20 min to fully dissolve. Please avoid vortex vigorously.



Note: The product listed herein is for research use only and is not intended for use in human or clinical diagnosis. Suggested applications of our products are not recommendations to use our products in violation of any patent or as a license. We cannot be responsible for patent infringements or other violations that may occur with the use of this product.